



South SWP Hydropower Relicensing, FERC Project No. 2426

AGENDA

Whitewater Boating Study Flow Observation Evaluation

- Date:** Friday, December 7, 2018.
- Time:** 9:00 a.m. to 2:30 p.m.
- Location:** Begin at Frenchman's Flat off Interstate 5, Templin Highway Exit (directions below)
- Objective and Scope:** To conduct a reconnaissance effort and record observations of flows along the upper portion of middle Piru Creek (Pyramid Reach) to evaluate Pyramid Reach as a potential whitewater boating resource. This field excursion event will involve staging from vehicles and walking along the shoreline, including road sections along old Golden State Highway, to view and document prospective whitewater boating opportunities and conditions at and between six distributed observation points along the Piru Creek. The intent is to obtain input from experienced boaters on the whitewater boating conditions in the upper reach of middle Piru Creek. Participants should bring warm clothing, sturdy footwear, their own food/lunch, and be prepared to walk up to three miles on paved road sections as well as riverine fisherman trails and/or other potentially rough and heavily vegetated terrain.

Introductions, Orientation, and Safety Discussion

- 9:00 – 9:15 Meet at Frenchman's Flat along the Golden State Highway (**Interstate 5 Exit 183, Templin Highway**). Proceed north on Golden State Hwy until you come to the gate at Frenchman's Flat. Meet in the parking area next to the gate.

Overview of Agenda and Plan for the Day

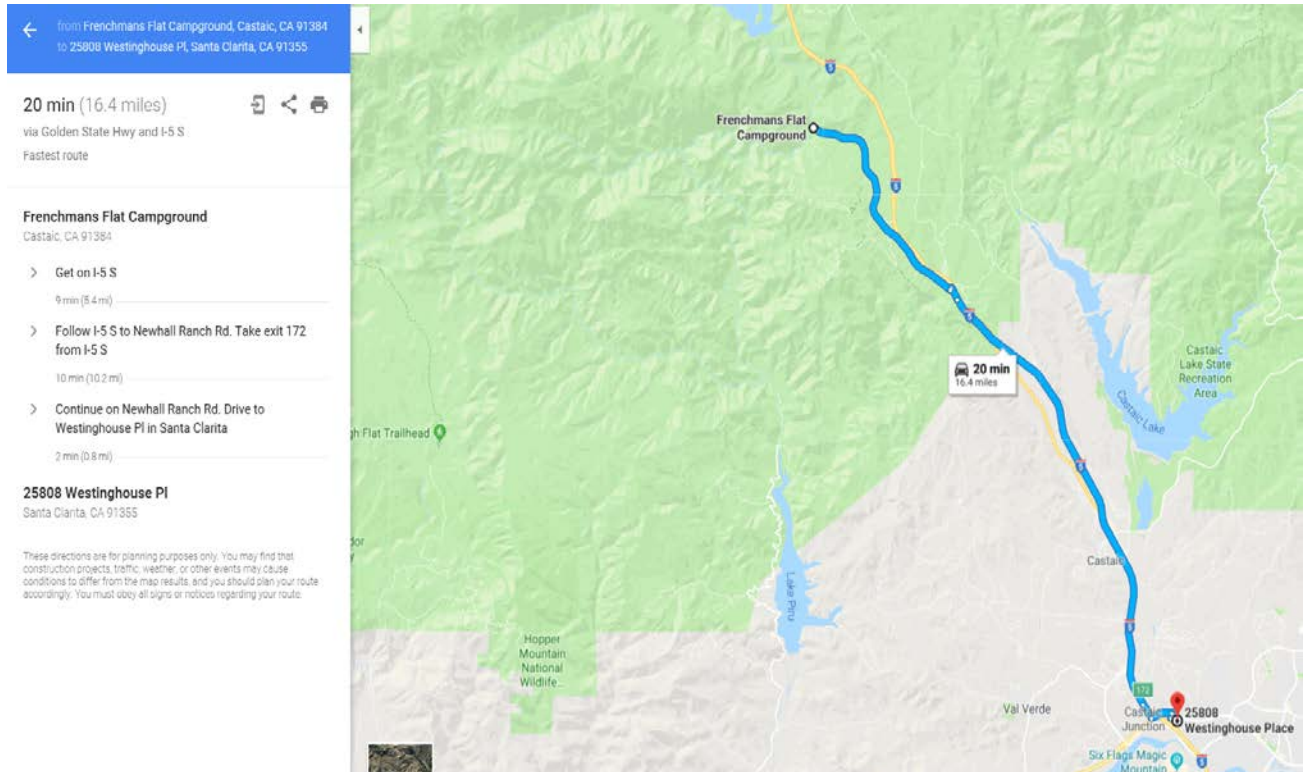
- 9:15 – 9:30 Go over handouts, maps, agenda, and related documents with all attendees. Open discussion on evaluation, context, intent, objectives, and needs.

Visit Creekside Observation Points

- 9:30 – 1:30 Attendees will car pool through locked gate located at Frenchman's Flat to minimize vehicle traffic. Anticipate spending approximately 30 minutes or so at each of the six observation points (participants needing to leave early can turn in forms based on the points/reaches they evaluate).

Debrief at Frenchman's Flat

- 1:30 pm – 2:30 Attendees will meet back at Frenchman's Flat gate to turn in forms, review the day's observations and conclusions, and conduct open discussion to gather additional input about whitewater boating opportunities in upper Middle Piru Creek.
-



Piru Creek Whitewater Boating Observation Flow Event
Evaluation Form 12/7/2018

Name & Phone number:

Email:

- 1) Have you boated Piru Creek, if so where and when? _____
- 2) Based on what you have seen today, in general, how would you rate the whitewater difficulty in this upper Middle Piru Creek Reach at this flow of 200 CFS (Class I to Class VI)? _____

- 3) Do you feel this reach is worth boating if scheduled flows of 200 cfs are provided? _____
- 4) Based on your experience, do you think optimal boating flows should be higher or lower than the current flow you are evaluating (200 CFS)? _____
- 5) Please provide your opinion about the boating characteristics of Upper Middle Piru Creek at the 200 cfs flow you are evaluating. _____

- 6) Please provide your observations about the boating potential, concerns, hazards, and opportunities for each of the evaluation points, or reaches we looked at today

Location 1 (and downstream) _____

Location 2 (and downstream) _____

Location 3 (and downstream) _____

Location 4 (and downstream) _____

Location 5 (and downstream) _____

Location 6 [Frenchman's Flat] (and downstream) _____

Location 7 [additional site please provide a detailed description] _____

- 7) Is the entire reach from Pyramid Dam Bridge to Frenchman Flat suited to boat as one complete run or are there segments you noted that are more suitable for boating and/or practice or training runs?

- 8) Does this reach hold good potential for beginners, intermediates or advanced boaters to practice at?

- 9) Did you observe any significant safety issues at the flow you are evaluating – such as swims, pins, man-made or natural river features etc.? Please explain below. Use the back side of this paper if you need more space.



- Locations
- Wild and Scenic River Classification**
- Recreational
- Wild
- Sespe Wilderness

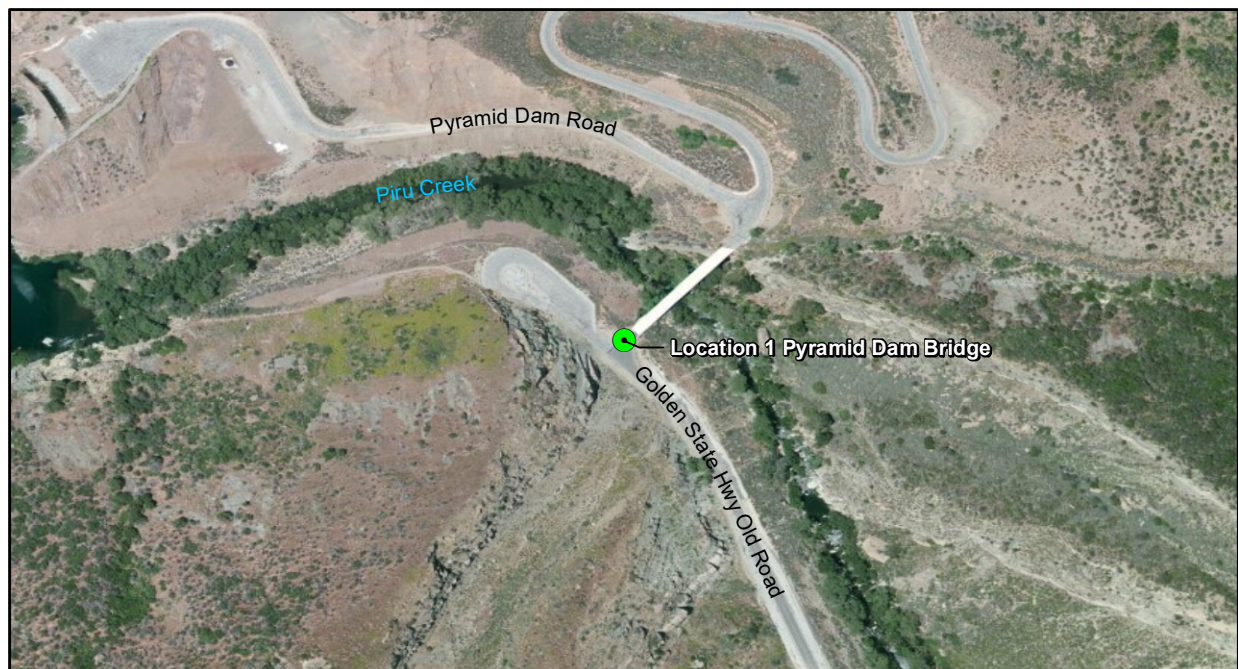


SOUTH SWP HYDROPOWER RELICENSING
FERC PROJECT NO. 2426


**Piru Creek (Pyramid Reach)
Whitewater Boating**



Prepared: December 2018
Projection: CA SP V NAD83 (ft)
Background: ESRI World Topo (2015)
U:\224202086\gis_\MXDs\Overview.mxd



500
Feet



Date:
11/27/2018

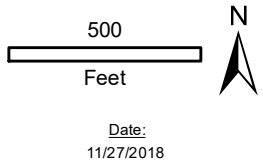
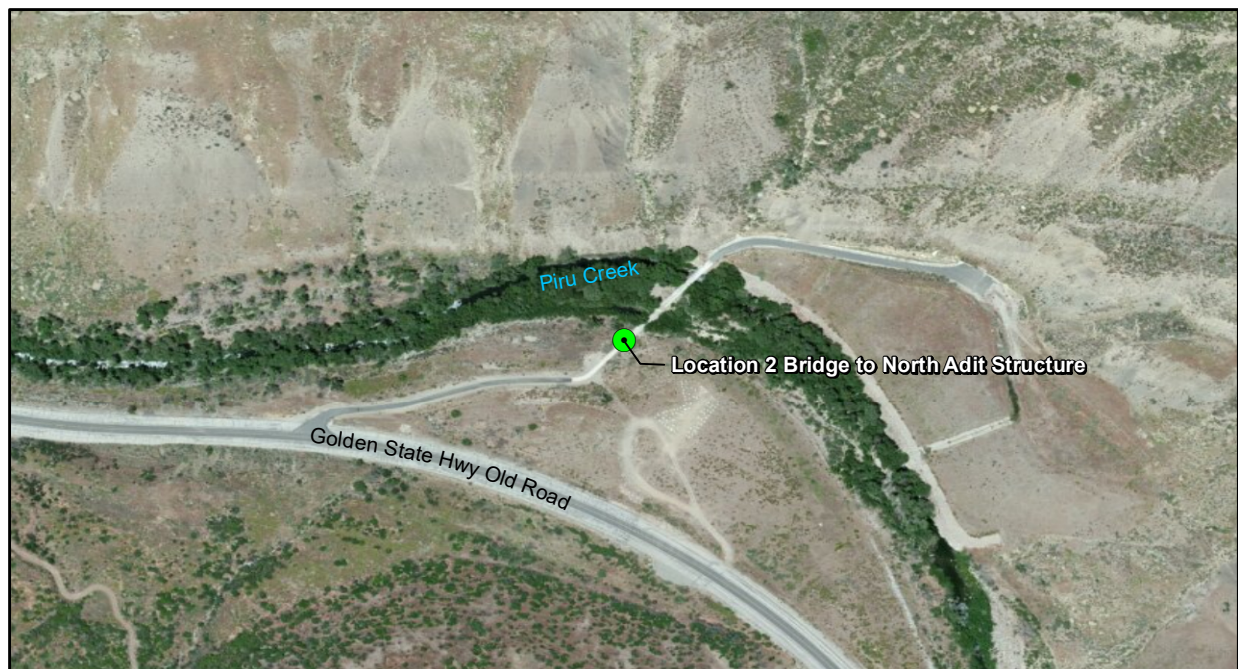
SOUTH SWP HYDROPOWER RELICENSING
FERC PROJECT NO. 2426

Legend

 Locations

Los Angeles County, CA
Lat: 34.639729
Long: -118.761312

Map Citations
Aerial Imagery: ESRI, Nov. 10, 2016



SOUTH SWP HYDROPOWER RELICENSING
FERC PROJECT NO. 2426

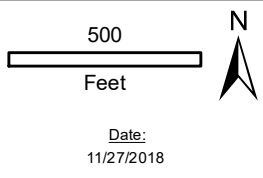
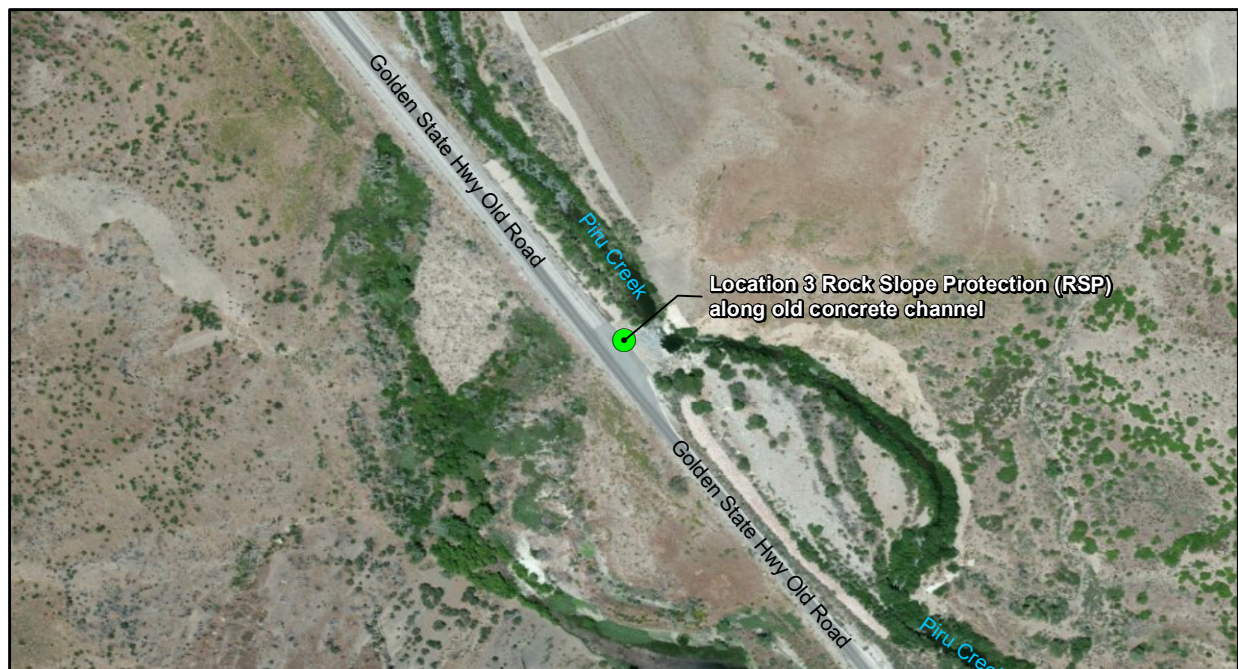
Legend

 Locations

Los Angeles County, CA
Lat: 34.635077
Long: -118.751522

Map Citations
Aerial Imagery: ESRI, Nov. 10, 2016

Date:
11/27/2018



SOUTH SWP HYDROPOWER RELICENSING
FERC PROJECT NO. 2426

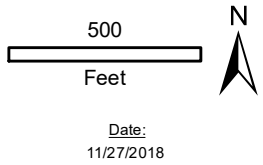
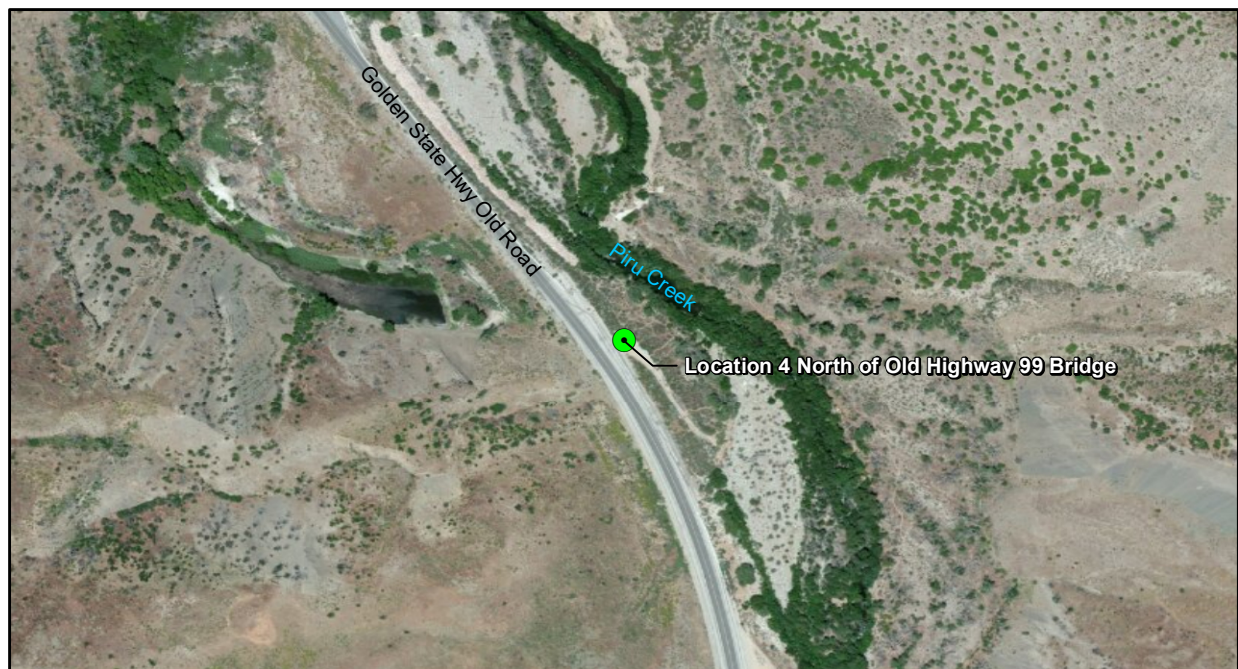
Legend

 Locations

Los Angeles County, CA
Lat: 34.630000
Long: -118.747562


Map Citations
Aerial Imagery: ESRI, Nov. 10, 2016

Date:
11/27/2018



SOUTH SWP HYDROPOWER RELICENSING
FERC PROJECT NO. 2426

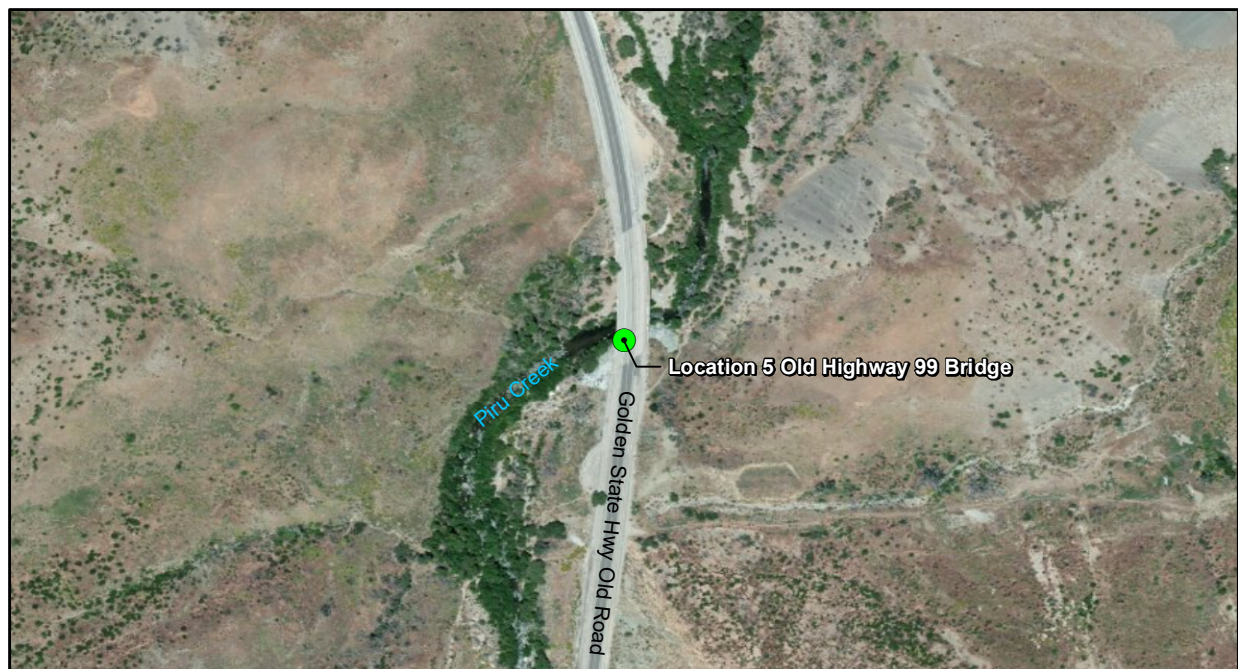
Legend

 Locations


Los Angeles County, CA
Lat: 34.627335
Long: -118.745347

Map Citations
Aerial Imagery: ESRI, Nov. 10, 2016

Date:
11/27/2018



500
Feet



Date:
11/27/2018

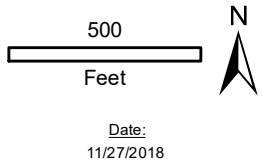
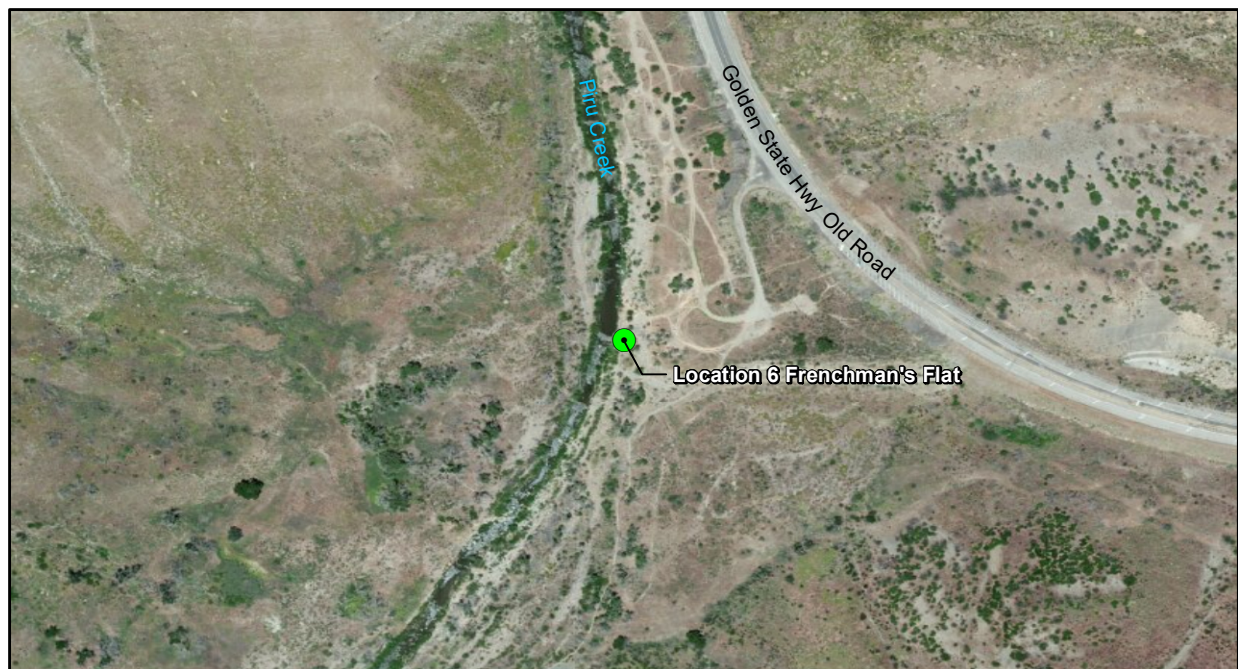
SOUTH SWP HYDROPOWER RELICENSING
FERC PROJECT NO. 2426

Legend

 Locations

Los Angeles County, CA
Lat: 34.623572
Long: -118.744498


Map Citations
Aerial Imagery: ESRI, Nov. 10, 2016



Date:
11/27/2018

SOUTH SWP HYDROPOWER RELICENSING
FERC PROJECT NO. 2426

Legend

 Locations

Los Angeles County, CA
Lat: 34.615582
Long: -118.745088

Map Citations
Aerial Imagery: ESRI, Nov. 10, 2016



South SWP Hydropower Relicensing, FERC Project No. 2426

SSWP Whitewater Observation Flow
Frenchmans Flat/Lower Piru Reach

Friday, 10:00am – 2:00pm / December 7, 2018

Sign-In Sheet

Name	Organization	Phone Number	E-mail	Initial
Bryan Rorie	Stantec	831-239-7875	Bryan.Rorie@stantec.com	BR
Kirby Gilbert	Stantec	2066505406	Kirby.Gilber@stantec.com	KG
Michael Barrientez	Stantec		Michael.Barrientez@stantec.com	
Rocky Brown	Stantec	805-338-0406	Rocky.Brown@stantec.com	RB
Rick Norman	Boater	6266253617	Ricpatnor@aol.com	RN
Larry Wade	Boater			
Theresa	American Whitewater	916-435-1410	theresa@americanwhitewater.org	TW
Evy	Forest Service		Erimbenieks02@fs.fed.us	
Steve Bowes	Parks NPS	4156232721	Stephen.bowes@nps.gov	SNB
Anthea Raymond	LA Kayak Club	322-388-7207	anthea.raymond@gmail.com	AR
Michelle Salazar			michellebsalazar94@gmail.com	
Johnathon Cizmar	BOATER (SIERRA SOUTH INC.)	661-644-9007	jonathan.cizmar@gmail.com	JPC



South SWP Hydropower Relicensing, FERC Project No. 2426

Name	Organization	Phone Number	E-mail	Initial
Tommy Serviss	SIERRA SOUTH/LOCAL	661-510-4709	tserviss76@gmail.com	TS
Micheal Farrell			arrmike@gmail.com	
Matthew Perkins			perkinsm89@gmail.com	
Josh Travers	Forest Service	626 574 5374	jtravers@fs.fed.us	JT
Justin Seastrand	Forest Service	626 574 5278	jseastrand@fs.fed.us	JS
MATTHEW RUBAY	SIERRA SOUTH	Old 644-2040	lvegrassier@GMAIL.COM	MR

South SWP Hydropower Relicensing, FERC Project No. 2426 Whitewater Study Flow Observation Summary

Meeting Details

When: Friday, December 7, 2018 – 9:00 a.m. to 2:00 p.m.

Where: Frenchman's Flat and Piru Creek

Objective: Conduct field reconnaissance and site visit, conduct further interview follow-on discussions in group setting, gather additional information, and observe flows of approximately 200 cfs.

Attendees

Kirby Gilbert (Stantec), Bryan Rorie (Stantec), Michael Barrientez (Stantec), Rocky Brown (Stantec), Rick Norman (Public Piru-creek experienced Boater), Teresa Simsiman (American Whitewater [AW]), Steve Bowes (NPS), Anthea Raymond (LA Kayak Club), Jonathan Cizmar (experienced boater), Tommy Serviss (experienced boater), Josh Traver (Forest Service), Justin Seastrand (Forest Service), Matthew Rubay (experienced boater)

The following attendees were invited to participate and had planned on attending but due to unforeseen circumstances they were unable to attend: Experienced boater Larry Wade.

Summary

Prior to the meeting, attendees were provided with the following information located [HERE](#) on SharePoint:

- Agenda
- Site Location Maps

Meet at 9:00 a.m. at Frenchman's Flat to conduct site reconnaissance

Bryan Rorie began the meeting with introductions and a review of the meeting purpose and agenda. Shortly after introductions, Bryan Rorie provided a site-specific health and safety tailgate briefing to discuss potential hazards associated with the site reconnaissance. Following the safety meeting, the attendees performed a walkthrough reconnaissance survey on the approximate three-mile section of Piru Creek between Pyramid Lake Dam and Frenchman's Flat to observe whitewater recreation potential (gradient, channel openings, boulders, and bed characteristics) and assess access, including possible put-in and take-out locations. Pre-selected observation locations were chosen to help the participants provide evaluation information for six locations. All participants conducted their evaluation as a group. Flows were planned to be ramped up to about 200 cubic feet per second (cfs) by 10:00am but were actually slightly higher

as noted using the Pyramid (PYM) California Data Exchange Center (CDEC) gauge. This supplemental flow release was part of the annual delivery to United Water Conservation District (UWCD). This year's allocation to UWCD was only 1,100 AF of water and was delivered during the study flow observation. Some of the general observations made by the participants as follows:

- There were no recreationists at Frenchman's Flat
- The day before the flow observation, rain had been persistent in the area and brought natural flows up in Piru Creek and adjoining drainages.
- There were some rocks and small debris on the road and shoulders, likely moved during the rain event.
- There is relatively easy access to the upper reach, allowing the potential for multiple short whitewater boating runs. There is parking on the shoulder of the road for visitors and access/rescue routes are clear.
- Boaters stated that they are willing to travel up to two hours to boat on a run that is 1-2 miles long and would likely boat the same run multiple times.
- It was brought up that since the water is only released once a year, maybe there is a benefit of having a 1-2-day event. The event could be a whitewater boating festival or gathering for safety, training, environmental awareness, and boating.
- The boaters agreed if releases were known in advance, the boating community would respond, and boaters would like to participate in the upper reach, even if only for a couple days per year. The quality and characteristics, including access, were good at flows of 200 cfs and perhaps a bit higher.

Location 1, Pyramid Dam Bridge

- All participant boaters agreed that the upper stretch of the creek has class 3+ rapids at the flow levels above 200 cfs. The shoreline leading to the creek from the road are steep and rugged but accessible. The area appeared to be good for intermediate and advanced boaters due to the limited eddies. Because access is slightly difficult boaters would likely have to lower boats down to gain access.
- Jonathan Cizmar noted that the reach looked good for boating from the observation point on the bridge and after walking down to river level the reach appeared better and open.
- Theresa indicated that there are drops and river pools before the bridge with rapids that could be of interest to boaters.

Location 2, Bridge to North Adit Structure

- The creek in this location is easily accessed from the adit road. Water was flowing over the adit road as the creek had bifurcated at the flow above 200 cfs; the flow over the road was approximately a foot deep with dense vegetation on the upstream side.
- Boaters agreed that this section was highly overgrown. So overgrown that it caused a diversion about 100 yards upstream. Fallen trees and heavy vegetation on the east side of the bank (boaters right) were observed.
- While there was high interest in boating this uppermost reach, this section would likely require a portage (the act of carrying your kayak around a rapid because you don't want to run it in your kayak) and walk a distance to the next downstream put-in site.
- Matthew Rubay noted that the creek channel is overgrown and the immediate reach above and below the adit road bridge is not really suitable for boating. The reach would need a lot of cleaning and prep work if one attempted passing through it.
- Athena Raymond mentioned she would want to identify an upper and lower put in/put out location and find a suitable trail or clear path that would serve as the portage. She thought that the dense vegetation could be the cause of the bifurcation of the creek in this location. The portaging out of the reach would make it an upper intermediate to advanced reach.
- Tommy Serviss noted that there are significant rapids at this flow, with some large cement blocks that might contain rebar, big tree logs, and brush. After the adit road crossing the reach begins to widen again.
- Rick Norman noted that he thought about 40% of the flow was going under the adit road bridge and 60% was going over the adit road approaching the bridge.
- The LA Kayak Club might want to have one of their experienced boaters use a drone to better evaluate the reach and other areas.

Location 3, Rock Slope Protection along old concrete channel

- Matthew Rubay noted that this site has an enticing cascading 10-15-foot waterfall. He envisioned boaters staying river-left to avoid hazards on the right. The hazards consist of old concrete slabs with rebar and big rocks just below the drop. It was mentioned that there is an "auto-boof" (a whitewater characteristic that essentially launches the boater over rocks) present in the center/left of the slide. At the bottom of the feature there is a pool with small rapids to the left.
- Tommy Serviss noted that boaters will use this area for a park and play with repeat runs using the "awesome rapids" at the possible put in. This area is not for beginners and is considered to be class 3 or 4 rapids.
- It was mentioned that this reach at the 200cfs flow is more of a Class 4 run and yet is generally wide open, with the potential for a portage around a pool drop. Re-bar hazards are visible downstream. There are other hazards associated with Old Highway such as broken concrete slabs. Several take-out areas downstream of the drop are highly vegetated and restricted with debris. Overall there was high interest expressed by those participating and noted this reach was only for experienced boaters.

Location 4, North of Old Highway 99 Bridge

- The group did not stop at this location because it was determined with the limited amount of time left with the full release flow, it would take too long given the walking distance and safety hazards associated with the walk to the reach.
- Rick Norman walked up the reach from location 5 and noted that there were play waves about 200-300 yards above location 5. He said that this will be high interest for boaters.

Location 5, Old Highway 99 Bridge

- Tommy Serviss and Athena Raymond felt that location 5 provided the potential for a teaching and training reach with Class 2 rapids above and below the bridge. This area would serve as a good spot to bring families because of the easy access from the road and various put in locations. They noted that there were a lot of eddies which makes it interesting for boating.
- Matthew Rubay and Jonathan Cizmar noted that this area is a good place for beginners to practice. It offers good vantage points for both upstream and downstream reaches. They also felt it would be good to boat all the way down to Location 6 (Frenchman's Flat) for boaters of Class 2 skill sets. Boaters can "park and play" and this reach would be well utilized.
- Rick commented that this area of the reach is open and runnable at 200/300 cfs.
- This reach above and below the old Golden State Highway Bridge was generally considered by all to be a great river access location and could perhaps serve as a good location for a designated put-in and take-out point that could serve boaters running any part or all of Pyramid Reach. It was noted that recreationists are using the access now. In addition, there were several "angler trails" established along the shorelines both upstream and downstream of the bridge. Without vehicles regularly using this highway, it presented a safe and somewhat unique opportunity for all types of recreationists to enjoy the creek as compared to a roadway opened to vehicular traffic.

Location 6, Frenchman's Flat

- The boaters noted that in the Frenchman's Flat area, the channel constricted the flow and that would suggest boaters would need to stay river-right to avoid trees on the left for the section above the day use and dispersed camping area. They also agreed it is a Class 2 resource and that there are not many eddies but has play pools and is boatable. Overall this area was thought to serve as a good area for teaching and training.
- The riparian area was observed to have heavy and dense vegetation such as; cotton woods, cattail, and willows. These were characterized as low-level hazards. The access to the campgrounds makes it an easy access point for put in and pull out.

Name of river reach/Observation Point designation	Boatable (Yes/No)	Observed Possible Ranges of Whitewater Level of Difficulty Class levels (Classes I-V)	Summary Comments
Pyramid Dam Bridge (Location 1)	Yes	III – IV	Somewhat difficult to access the reach and would likely have to lower boats down along shoreline.
Bridge to North Adit Structure (Location 2)	Yes, but requires portage before adit road bridge	Not determined but more likely Class III and above	About one mile below Pyramid Dam bridge vast amount of vegetative growth and debris would likely require boaters to portage around the adit road bridge section. Debris causes a split channel and water to flow over the armored road leading to the adit as well as under the concrete bridge structure.
Rock slope protection along old concrete channel (Location 3)	Yes	IV	Different more advanced boating characteristics with limited eddies. Would have to make quick turns to avoid hazards. More difficult rapids were created at the bottom due to the rock slope.
North of Old Highway 99 Bridge (Location 4)	Yes	Not determined	Did not analyze this section as a group, but participants walked up stream from the Old Highway 99 bridge and could see whitewater characteristics including a “play wave” section.
Old Highway 99 bridge (Location 5)	Yes	II	Easy access to the reach. Good reach to use as a teach new and unexperienced boaters or for practice and repeat runs by experienced boaters
Frenchman’s Flat (Location 6)	Yes	II	Lots of vegetation that constrict the channel in places. Easy access points. A place to learn and practice as well as serving as put-in location for 15-mile advanced/expert run through wilderness canyons to Lake Piru.

Note: These six sites are located within the first three miles (beginning from the dam) of the reach.

Action Items

- Provide attendees with copies of the agenda, site maps, and CDEC flows. – Completed as of December 11, 2018.

- There was considerable interest in doing some reconnaissance of the 15 mile reach below Frenchman’s Flat leading to Lake Piru and it was identified that some of the experienced boaters would like to participate in a walk through in January, 2019 and Stantec noted they would follow up to help arrange this event. – Completed as of January 11, 2019

WARNING:

**FLOW IN PIRU CREEK WILL BE INCREASING IN EARLY
DECEMBER WITH A PEAK ON DECEMBER 7, 2018**

BETWEEN THE HOURS OF 10AM-2PM

**SOME MINOR FLOODING MAY OCCUR PLEASE USE
WITH EXTREME CAUTION**

FOR QUESTIONS PLEASE CALL

(661) 944-8600

PELIGRO:

**EL FLUJO EN PIRU CREEK AUMENTARÁ A PRINCIPIOS DE
DICIEMBRE CON UN PICO EL 7 DE DICIEMBRE DE 2018.**

ENTRE LAS HORAS DE 10AM-2PM.

**ALGUNAS INUNDACIONES MENORES PUEDEN OCURRIR
POR FAVOR USE CON EXTREMA PRECAUCIÓN.**

PARA PREGUNTAS POR FAVOR LLAME

STATE OF CALIFORNIA

DEPARTMENT OF WATER RESOURCES

Sign 5

An aerial photograph showing a network of roads. A main road runs vertically through the center. To the left, a road branches off and forms a loop. To the right, a road branches off horizontally. Several yellow pushpin markers are placed on the roads, each with a text label. The terrain is a mix of green vegetation and brownish-grey soil or sand. A few small cars are visible on the main road.

Frenchmans Flat

Gate 3

Sign 4



Gate 2
Sign 3

Lake Piru

Gate 1

Sign 2

Sign 1

Kiosk