

Legend

- Photo Points
- Greater Than 2.5 ft. Clearance
- Proposed Project Boundary
- i018_Road
- Stream/River
- Canal/Ditch
- Pipeline
- Fence



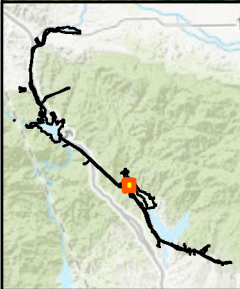
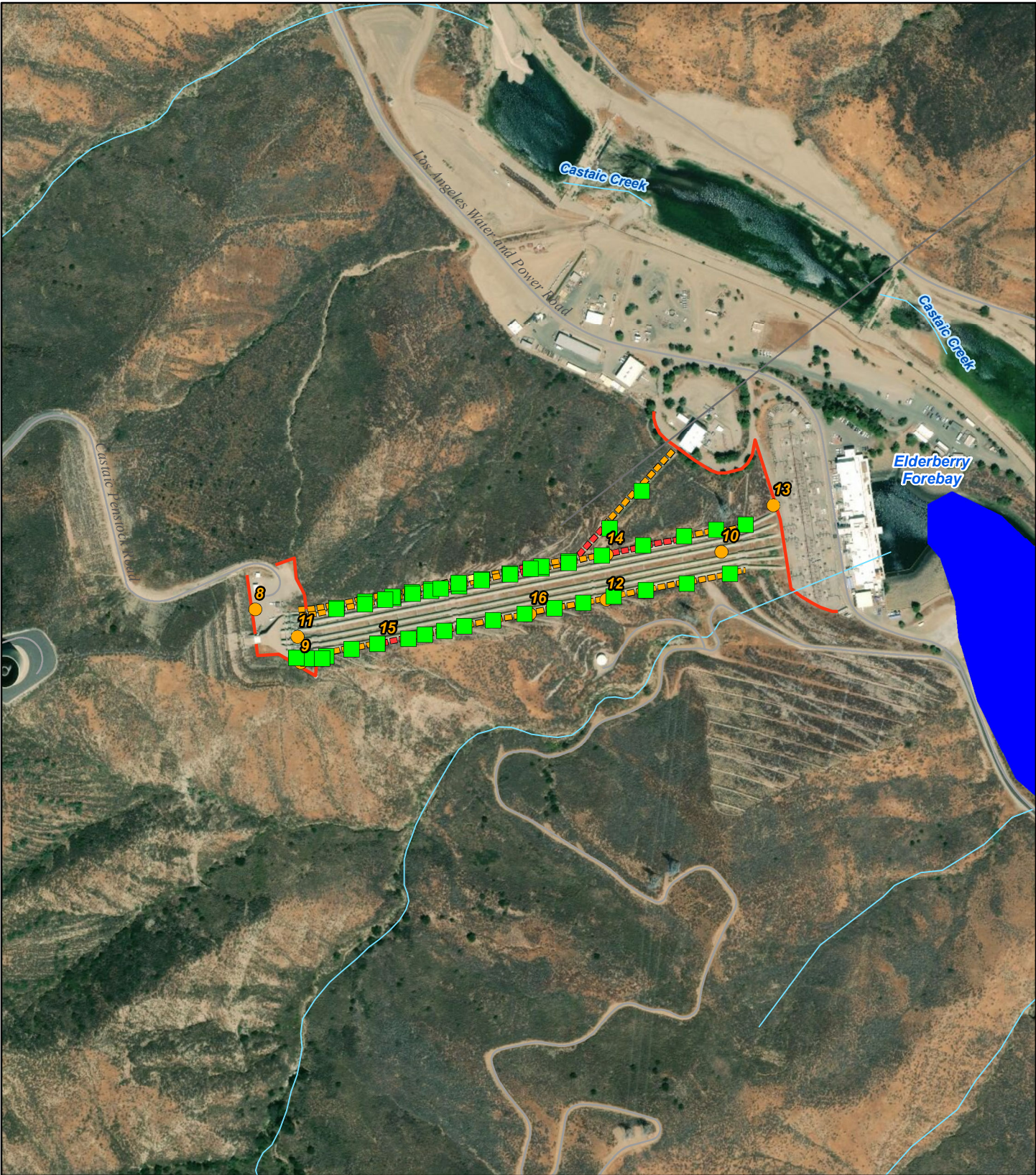
0 1,000 2,000 Feet

Prepared: 12/27/2018
 Projection: NAD 1983 StatePlane California V FIPS 0405 Feet
 Data and/or Background: HDR (2018), Esri Aerial

SOUTH SWP HYDROPOWER RELICENSING
 FERC PROJECT NO. 2426

**Lower Quail Canal
 Wildlife Movement Study**





Legend

- Photo Points
- Proposed Project Boundary
- i018_Road
- Stream/River
- Greater Than 2.5 ft. Clearance

Potential Barriers to Wildlife Movement

- 1 ft clearance
- 1.5 ft clearance
- 2 ft clearance
- Fence



Prepared: 12/27/2018
 Projection: NAD 1983 StatePlane California V FIPS 0405 Feet
 Data and/or Background: HDR (2018), Esri Aerial

\\sac-srv01\GIS\Projects\DWR\SSWP_Relicensing\map_docs\License_Application\Exhibit\Terrestrial\REPORT_WildlifeMovement_CastaicPenstocks.mxd

SOUTH SWP HYDROPOWER RELICENSING
 FERC PROJECT NO. 2426

**Castaic Penstock
 Wildlife Movement Study**

