

Legend

- SSWP Botanical Study Area

Properly Functioning Condition (PFC) Rating

- Properly functioning condition
- Functional - at risk
- Nonfunctional

Lentic **Lotic**

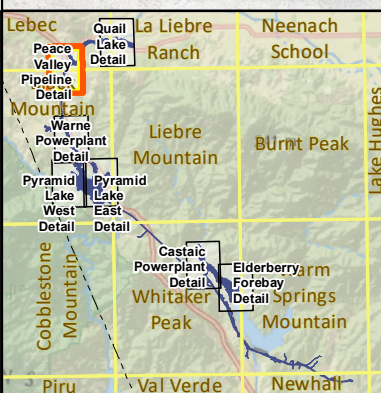
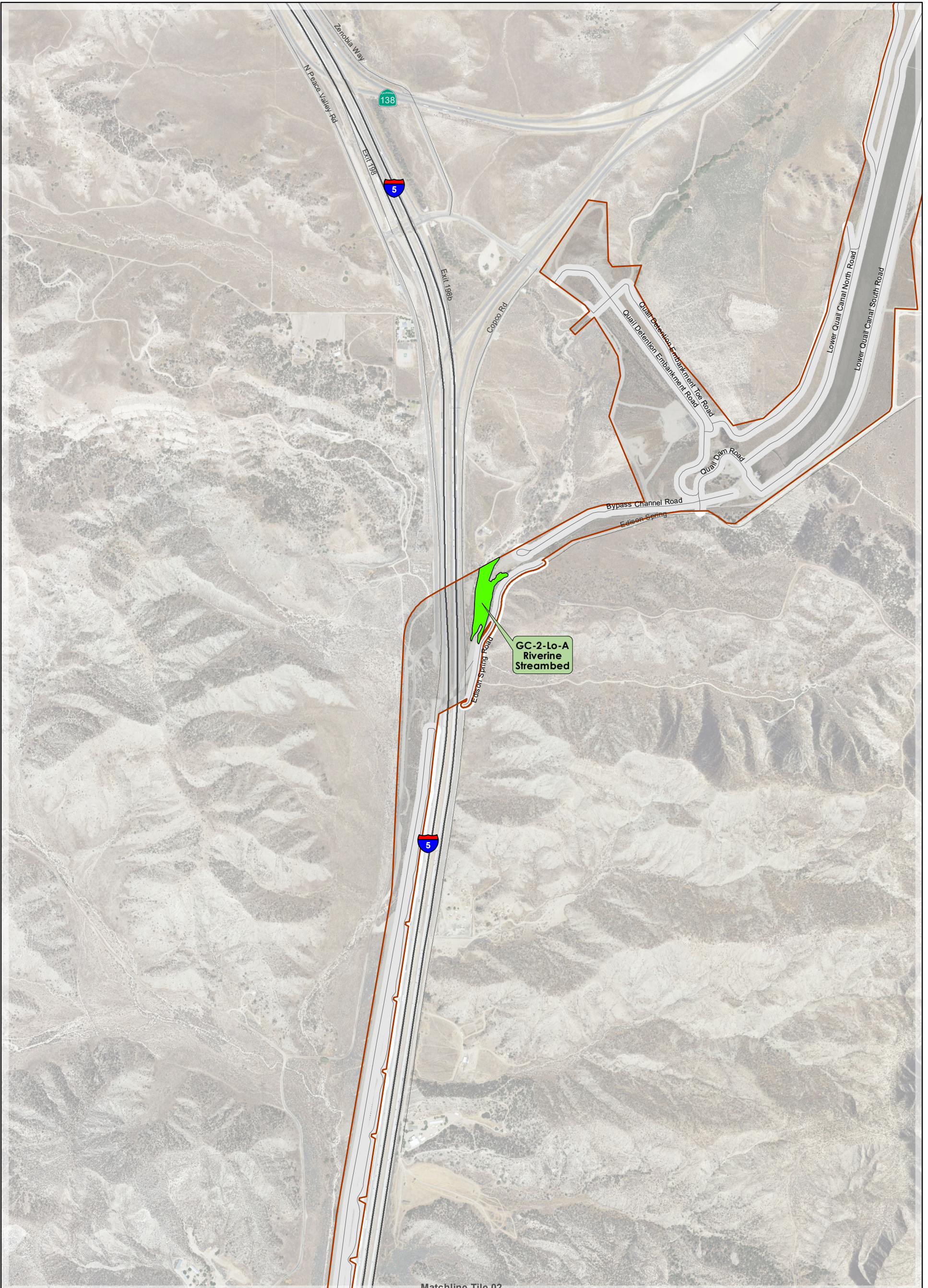
0 500 1,000 2,000 Feet

Prepared: July 2019
 Projection: NAD 1983 StatePlane California V FIPS 0405 Feet
 Contours: 40ft (NAVD88)
 PFC Data: Stantec (2017)
 Background: USGS EROS Ortho - 1ft

U:\224202042\gis\ MXDs\Biot\SSWP_LenticLoticSurvey_20190718.mxd

SOUTH SWP HYDROPOWER RELICENSING
 FERC PROJECT NO. 2426

**Wetland and Riparian Assessment
 SSWP Study Area
 2017-2018 Assessment
 (Quail Lake Detail)**



Legend

- SSWP Botanical Study Area

Properly Functioning Condition (PFC) Rating

- Properly functioning condition
- Functional - at risk
- Nonfunctional

Lentic **Lotic**

0 500 1,000 2,000 Feet

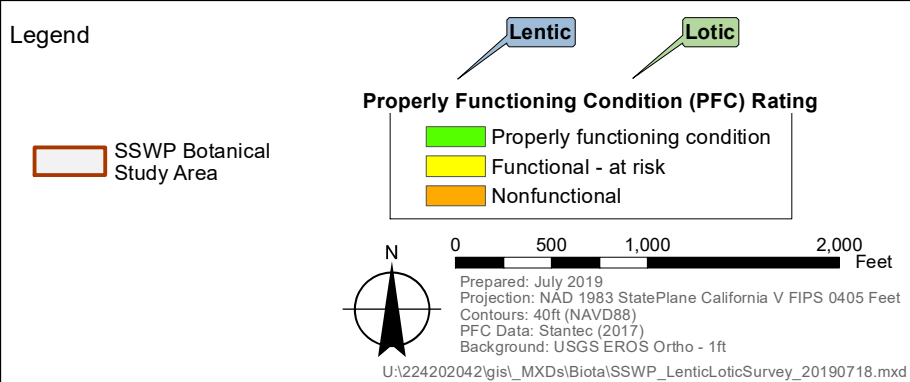
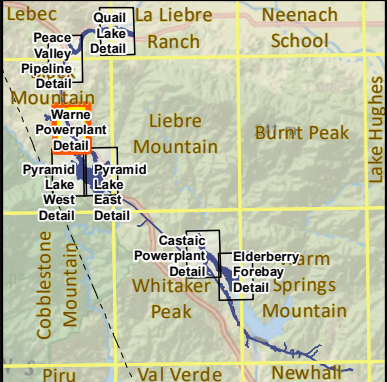
Prepared: July 2019
 Projection: NAD 1983 StatePlane California V FIPS 0405 Feet
 Contours: 40ft (NAVD88)
 PFC Data: Stantec (2017)
 Background: USGS EROS Ortho - 1ft

U:\224202042\gis\ MXDs\Biot\SSWP_LenticLoticSurvey_20190718.mxd

SOUTH SWP HYDROPOWER RELICENSING
 FERC PROJECT NO. 2426

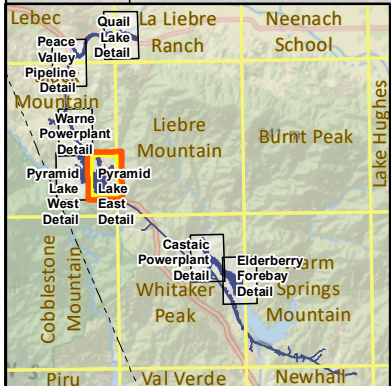
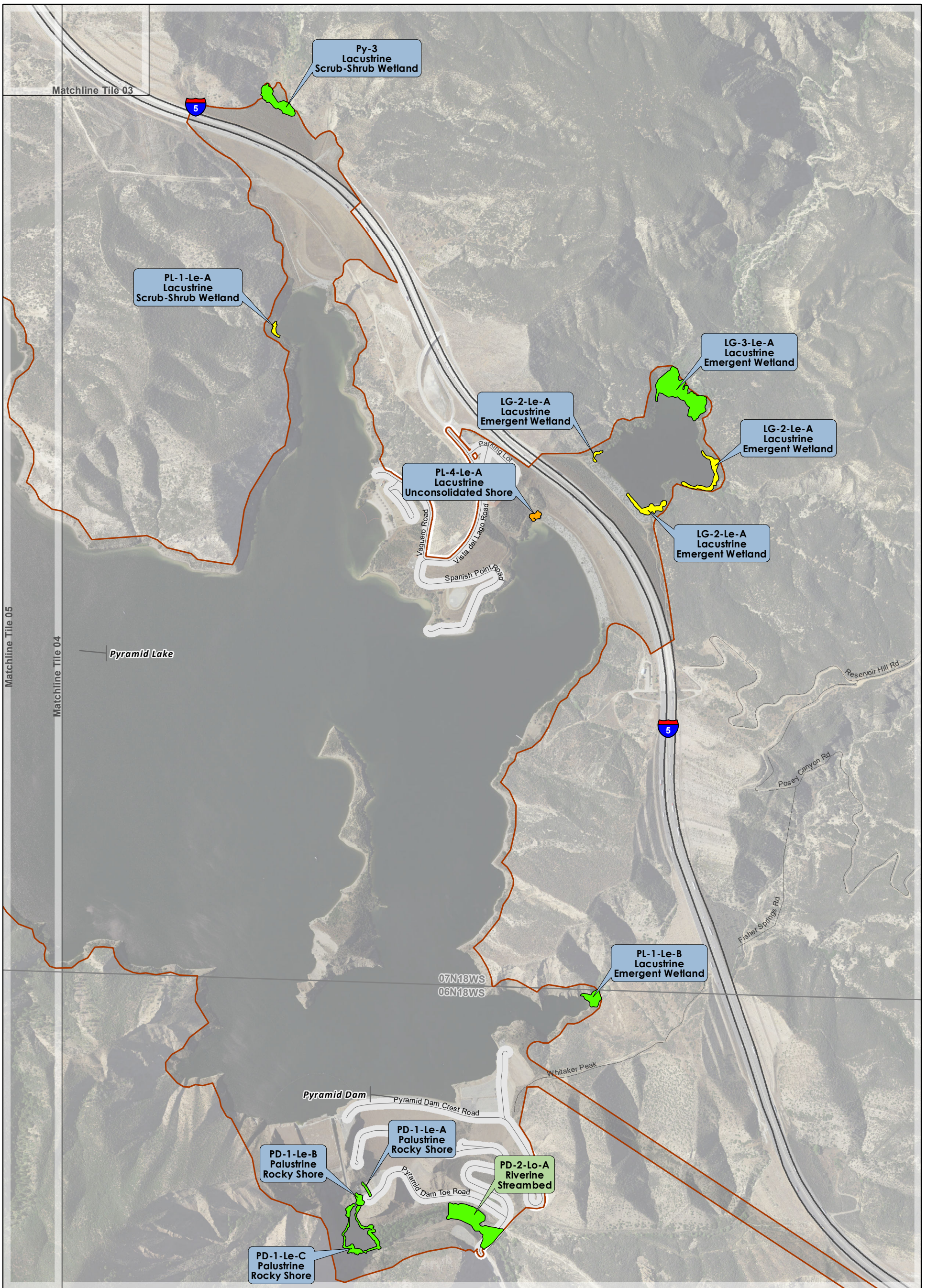
**Wetland and Riparian Assessment
 SSWP Study Area
 2017-2018 Assessment
 (Peace Valley Pipeline Detail)**

Matchline Tile 02



SOUTH SWP HYDROPOWER RELICENSING
 FERC PROJECT NO. 2426

**Wetland and Riparian Assessment
 SSWP Study Area
 2017-2018 Assessment
 (Warne Powerplant Detail)**



Legend

- SSWP Botanical Study Area

Properly Functioning Condition (PFC) Rating

- Properly functioning condition
- Functional - at risk
- Nonfunctional

Lentic **Lotic**

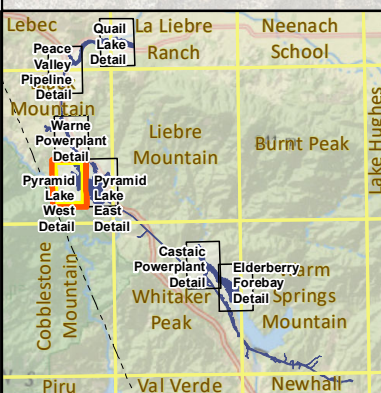
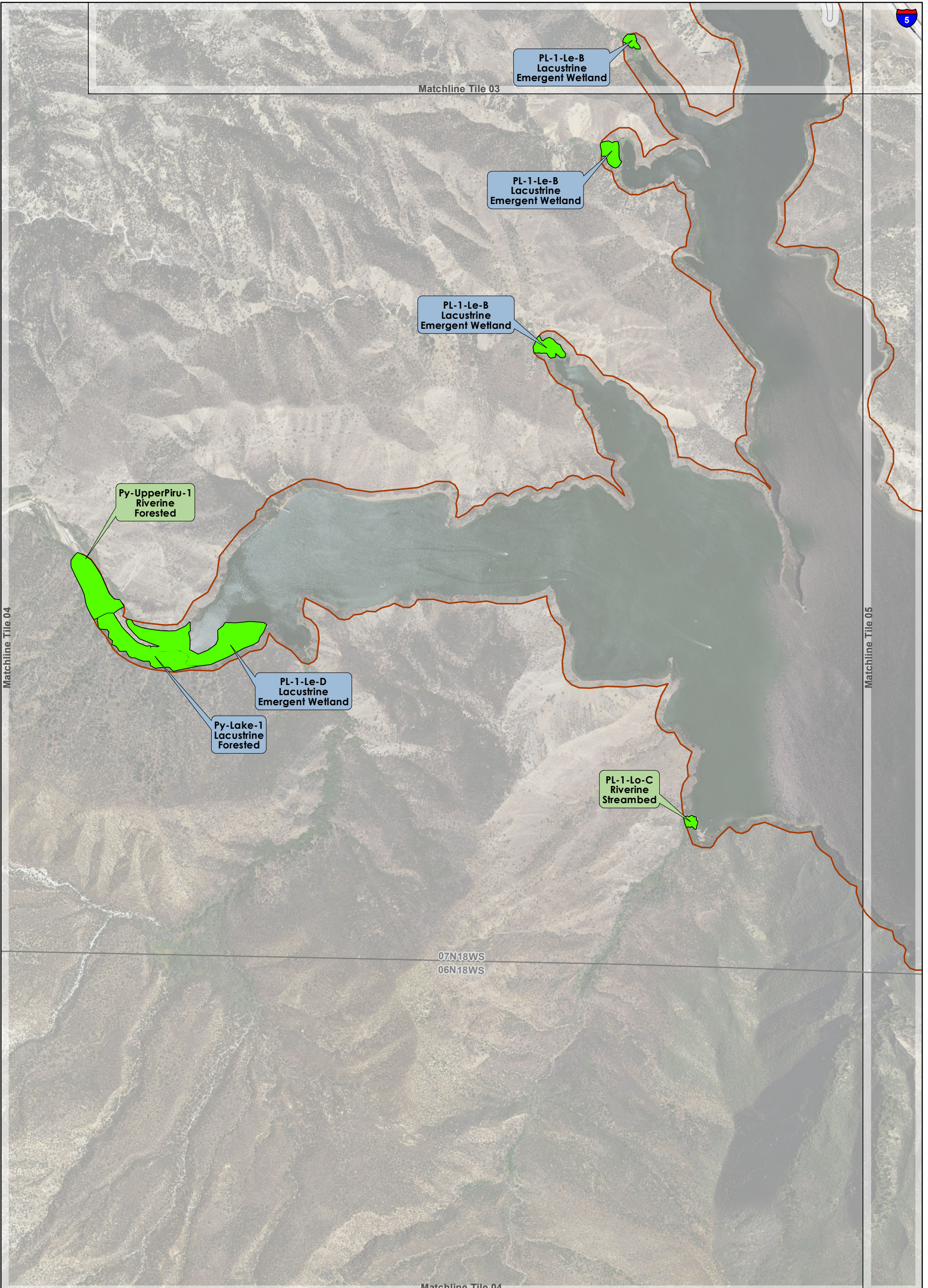
0 500 1,000 2,000 Feet

Prepared: July 2019
 Projection: NAD 1983 StatePlane California V FIPS 0405 Feet
 Contours: 40ft (NAVD88)
 PFC Data: Stantec (2017)
 Background: USGS EROS Ortho - 1ft

U:\224202042\gis\ MXDs\Biot\SSWP_LenticLoticSurvey_20190718.mxd

SOUTH SWP HYDROPOWER RELICENSING
 FERC PROJECT NO. 2426

**Wetland and Riparian Assessment
 SSWP Study Area
 2017-2018 Assessment
 (Pyramid Lake East Detail)**



Legend

- SSWP Botanical Study Area

Properly Functioning Condition (PFC) Rating

- Properly functioning condition
- Functional - at risk
- Nonfunctional

Lentic **Lotic**

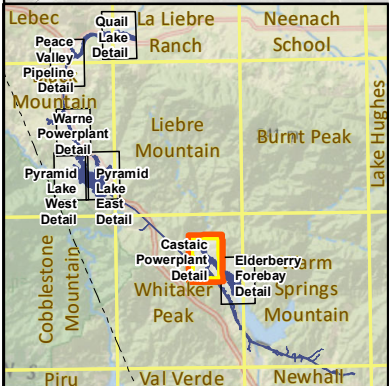
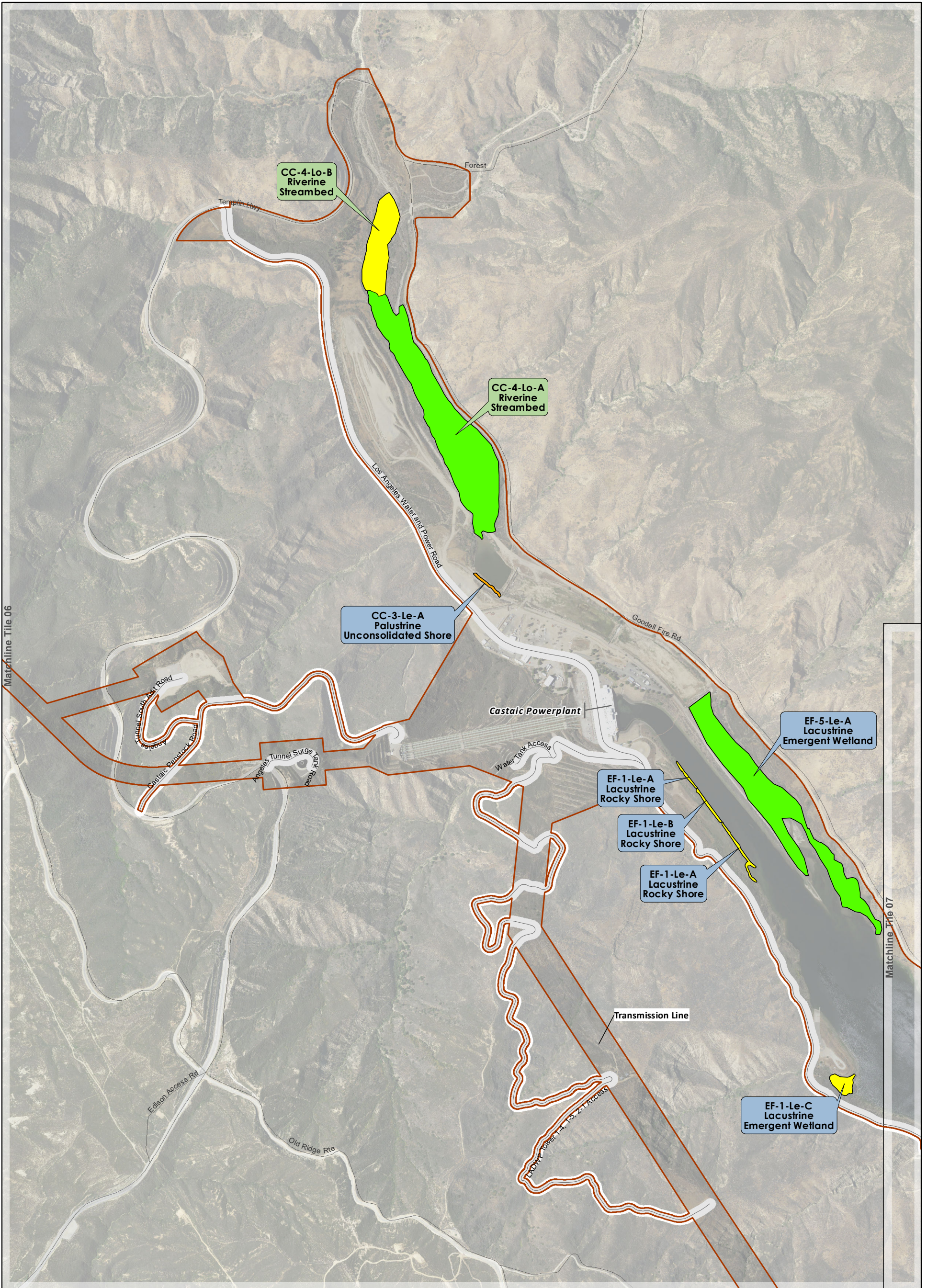
0 500 1,000 2,000 Feet

Prepared: July 2019
 Projection: NAD 1983 StatePlane California V FIPS 0405 Feet
 Contours: 40ft (NAVD88)
 PFC Data: Stantec (2017)
 Background: USGS EROS Ortho - 1ft

U:\224202042\gis\ MXDs\Biota\SSWP_LenticLoticSurvey_20190718.mxd

SOUTH SWP HYDROPOWER RELICENSING
 FERC PROJECT NO. 2426

**Wetland and Riparian Assessment
 SSWP Study Area
 2017-2018 Assessment
 (Pyramid Lake West Detail)**



Legend

- SSWP Botanical Study Area

Properly Functioning Condition (PFC) Rating

- Properly functioning condition
- Functional - at risk
- Nonfunctional

Lentic **Lotic**

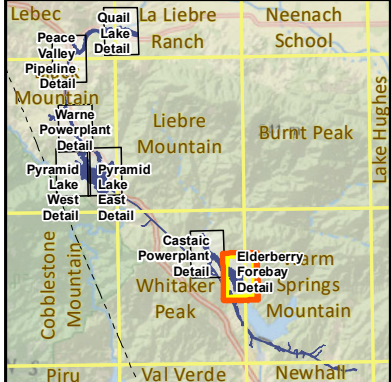
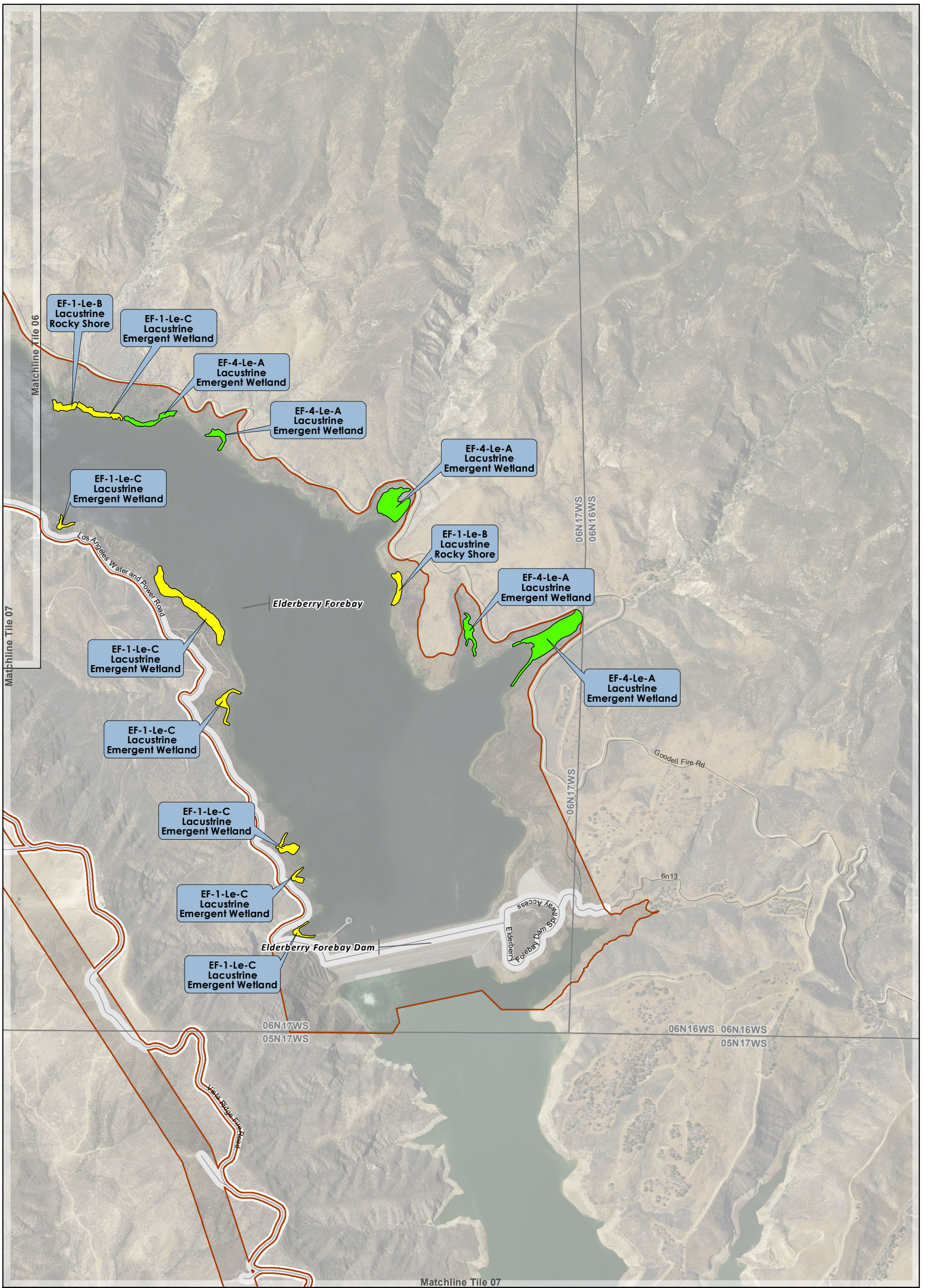
0 500 1,000 2,000 Feet

Prepared: July 2019
 Projection: NAD 1983 StatePlane California V FIPS 0405 Feet
 Contours: 40ft (NAVD88)
 PFC Data: Stantec (2017)
 Background: USGS EROS Ortho - 1ft

U:\224202042\gis\MXDs\Biota\SSWP_LenticLoticSurvey_20190718.mxd

SOUTH SWP HYDROPOWER RELICENSING
 FERC PROJECT NO. 2426

**Wetland and Riparian Assessment
 SSWP Study Area
 2017-2018 Assessment
 (Castaic Powerplant Detail)**



Legend

- SSWP Botanical Study Area

Properly Functioning Condition (PFC) Rating

- Properly functioning condition
- Functional - at risk
- Nonfunctional

Lentic **Lotic**

0 500 1,000 2,000 Feet

Prepared: July 2019
 Projection: NAD 1983 StatePlane California V FIPS 0405 Feet
 Contours: 40ft (NAVD88)
 PFC Data: Stantec (2017)
 Background: USGS EROS Ortho - 1ft

U:\224202042\gis\MXDs\Biota\SSWP_LenticLoticSurvey_20190718.mxd

SOUTH SWP HYDROPOWER RELICENSING
 FERC PROJECT NO. 2426

**Wetland and Riparian Assessment
 SSWP Study Area
 2017-2018 Assessment
 (Elderberry Forebay Detail)**