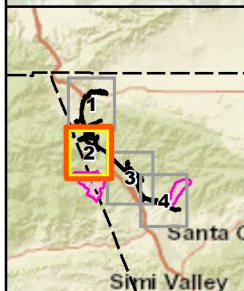
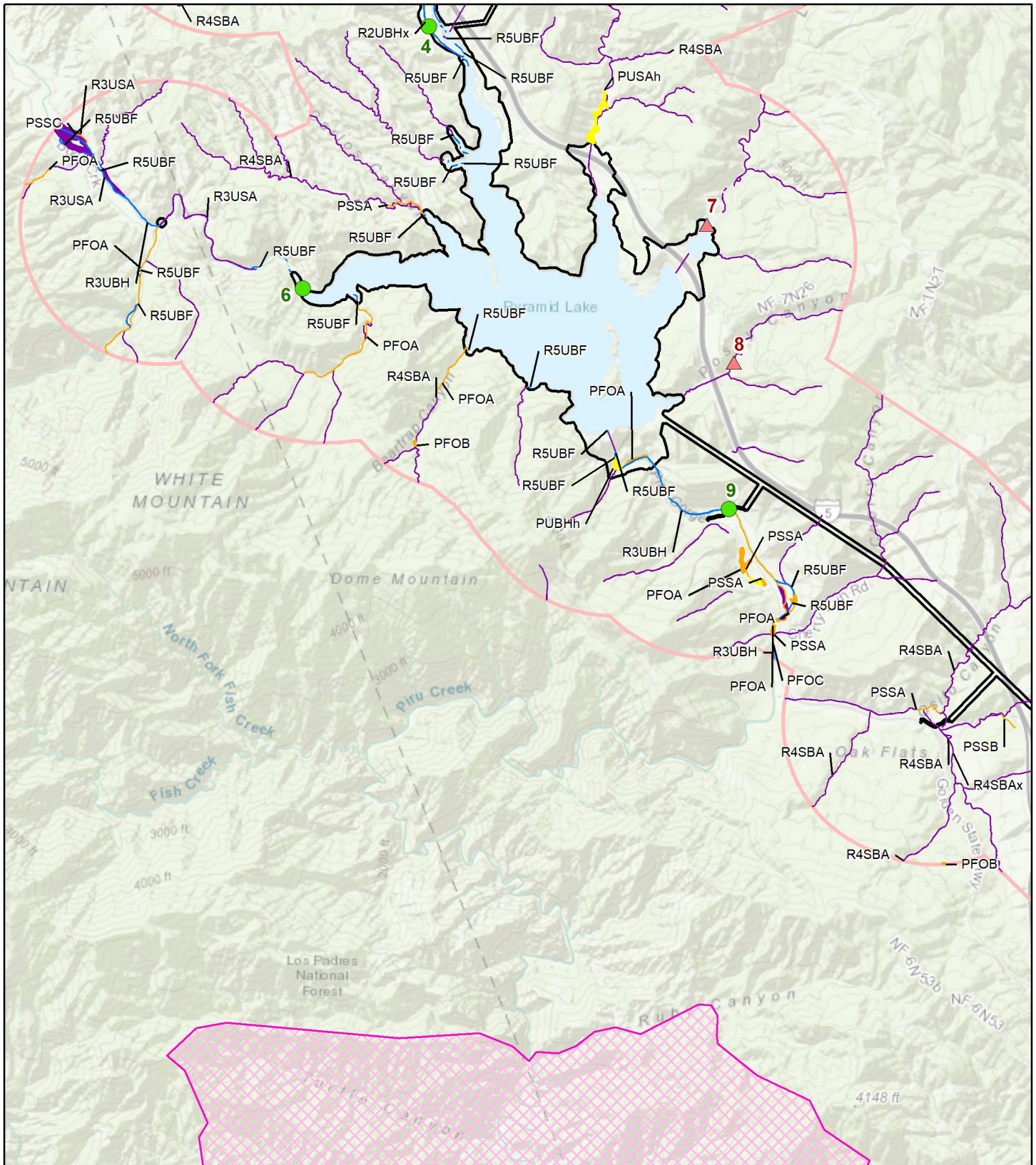


<p>MEETS 20-WEEK CRITERION</p> <ul style="list-style-type: none"> ● FIELD ASSESSED <p>DOES NOT MEET 20-WEEK CRITERION</p> <ul style="list-style-type: none"> ● FIELD ASSESSED ▲ DESKTOP ASSESSED ▲ CRLF CRITICAL HABITAT □ STUDY AREA □ PROPOSED PROJECT BOUNDARY (V.20180911) 	<p>NWI WETLAND TYPE</p> <ul style="list-style-type: none"> ■ EMERGENT WETLAND ■ FORESTED/SHRUB WETLAND ■ FRESHWATER POND ■ SEMIPERMANENTLY TO PERMANENTLY FLOODED STREAM ■ INTERMITTENT STREAM
----------------------------------------------------------------------------------------------------------------------------------------------------------------------------------------------------------------------------------------------------------------------------------------------------------------------------------------------------------------	----------------------------------------------------------------------------------------------------------------------------------------------------------------------------------------------------------------------------------------------------------

Prepared: 11/2018
 Projection: NAD 83, CASP V, US FT
 Data Sources - Habitat: USFWS; Background: ESRI
 \map_docs\License Application\Amphibians\REPORT_ESA_CRLF_AqHabitatSiteAssessment.mxd

**SOUTH SWP HYDROPOWER RELICENSING
 FERC PROJECT NO. 2426**

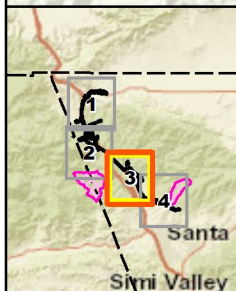
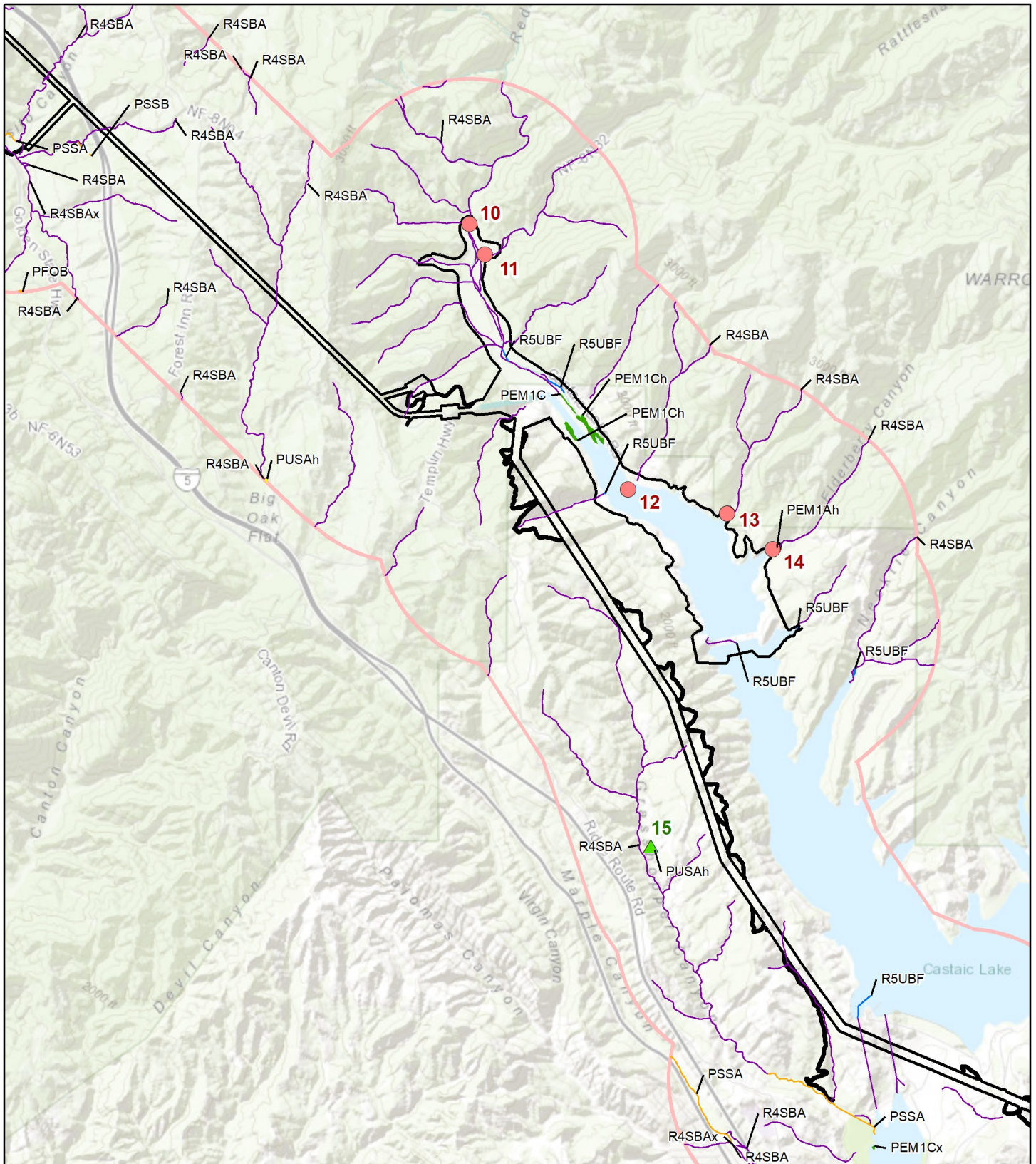
**ESA-listed Amphibians-
 California Red-legged Frog
 Aquatic Habitat Site Assessment
 MapTile: 01**



<p>MEETS 20-WEEK CRITERION</p> <ul style="list-style-type: none"> ● FIELD <p>DOES NOT MEET 20-WEEK CRITERION</p> <ul style="list-style-type: none"> ▲ DESKTOP ■ CRLF CRITICAL HABITAT □ STUDY □ PROPOSED PROJECT BOUNDARY (V.20180911) 	<p>NWI WETLAND TYPE</p> <ul style="list-style-type: none"> ■ EMERGENT WETLAND ■ FORESTED/SHRUB WETLAND ■ FRESHWATER POND ■ SEMIPERMANENTLY TO PERMANENTLY FLOODED STREAM ■ INTERMITTENT STREAM 	<p>Prepared: 11/2018 Projection: NAD 83, CASP V, US FT Data Sources - Habitat: USFWS; Background: ESRI</p>
---------------------------------------------------------------------------------------------------------------------------------------------------------------------------------------------------------------------------------------------------------------------------------------------------------------	----------------------------------------------------------------------------------------------------------------------------------------------------------------------------------------------------------------------------------------------------------	--------------------------------------------------------------------------------------------------------------------------------------

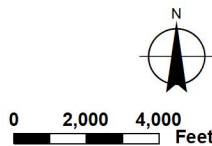
**SOUTH SWP HYDROPOWER RELICENSING
 FERC PROJECT NO. 2426**

**ESA-listed Amphibians-
 California Red-legged Frog
 Aquatic Habitat Site Assessment
 MapTile: 02**



- MEETS 20-WEEK CRITERION**
- ▲ DESKTOP
- DOES NOT MEET 20-WEEK CRITERION**
- FIELD
 - ◻ CRLF CRITICAL HABITAT
 - ◻ STUDY
 - ◻ PROPOSED PROJECT BOUNDARY (V.20180911)

- NWI WETLAND TYPE**
- EMERGENT WETLAND
 - FORESTED/SHRUB WETLAND
 - FRESHWATER POND
 - SEMIPERMANENTLY TO PERMANENTLY FLOODED STREAM
 - INTERMITTENT STREAM

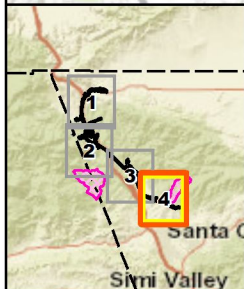
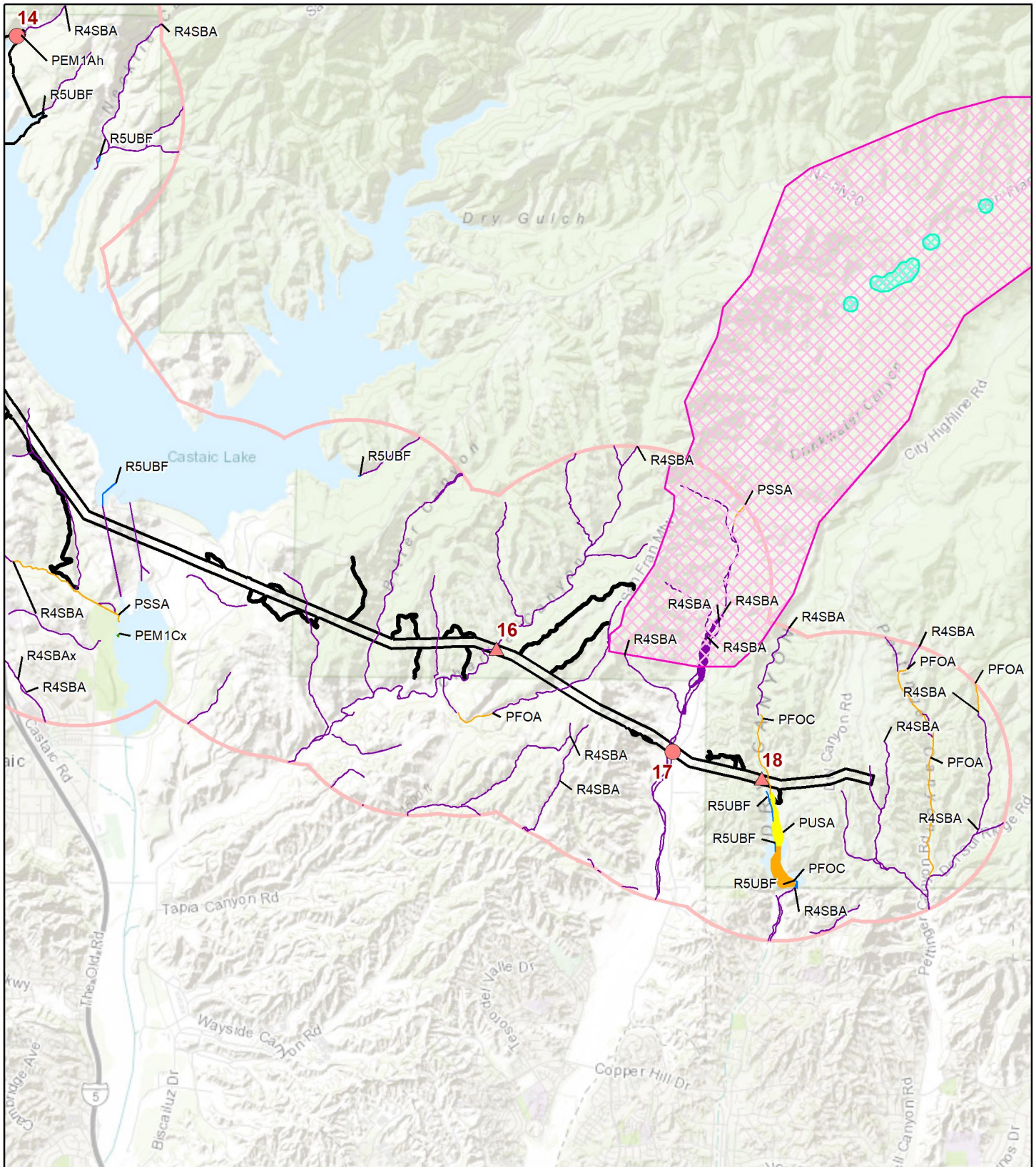


SOUTH SWP HYDROPOWER RELICENSING
FERC PROJECT NO. 2426

**ESA-listed Amphibians-
California Red-legged Frog
Aquatic Habitat Site Assessment
MapTile: 03**



Prepared: 11/2018
Projection: NAD 83, CASP V, US FT
Data Sources - Habitat: USFWS; Background: ESRI
map_docs\License_Application\Amphibians\REPORT_ESA_CRLF_AqHabitatSiteAssessment.mxd

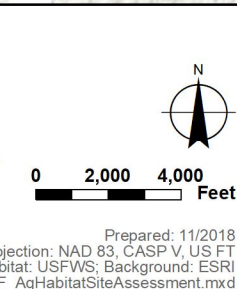


DOES NOT MEET 20-WEEK CRITERION

- FIELD
- ▲ DESKTOP
- CRLF RECORDS FROM CNDDB
- CRLF CRITICAL HABITAT
- STUDY
- PROPOSED PROJECT BOUNDARY (V.20180911)

NWI WETLAND TYPE

- EMERGENT WETLAND
- FORESTED/SHRUB WETLAND
- FRESHWATER POND
- SEMIPERMANENTLY TO PERMANENTLY FLOODED STREAM
- INTERMITTENT STREAM



**SOUTH SWP HYDROPOWER RELICENSING
FERC PROJECT NO. 2426**

**ESA-listed Amphibians-
California Red-legged Frog
Aquatic Habitat Site Assessment
MapTile: 04**